

RT5

Rugged Tablet



The Carlson RT5 is a ruggedized Windows data collector designed for surveying, stake-out, construction layout and GIS mapping, and is bundled with Carlson SurvPC – the Windows-based data collection program. Optionally, the RT5 can run SurvPC with esri OEM for use in the field. With 8GB of RAM, 256 GB of storage, you can collect and analyze your data quicker than ever before.

PERFORMANCE

- Powerful Windows 10 for office-to-field use
- Plenty of memory - 8 GB RAM & 256 GB flash storage



EXPANDABLE BATTERY



- All-day battery runs 10+ hours for minimal downtime
- Optional 15+ hour battery
- 5-minute hot swap

READY FOR ANYTHING

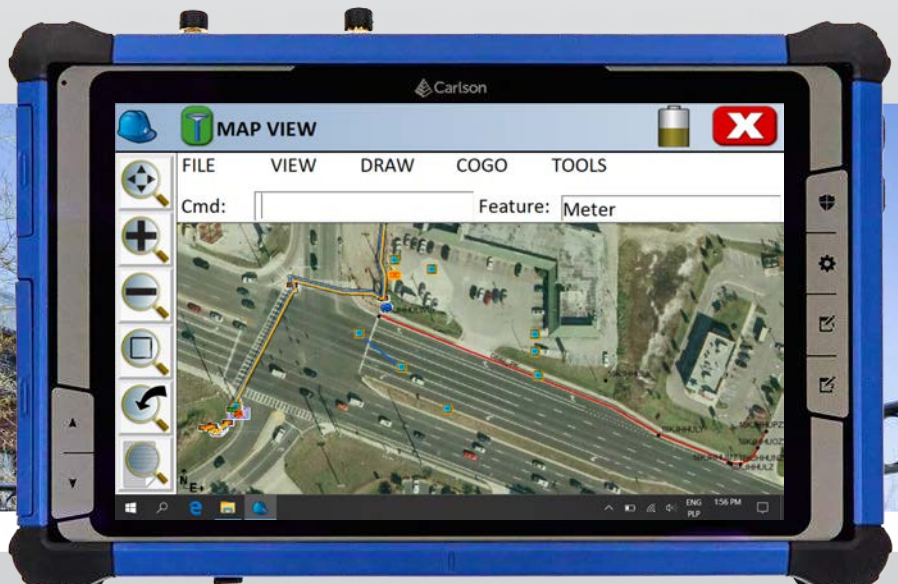
- Operates in extreme temperatures from 14F to 122F (-10° C to 50° C)
- Long Range Bluetooth®, Dual-band Wi-Fi®, USB 3.0 connectivity
- 4G LTE

FIELD-TESTED RUGGED

- Protection for your data
- Dustproof & water resistant (IP65 rating)
- Designed to MIL-STD-810G for ultra-ruggedness
- 2-year warranty

HIGH-VISIBILITY DISPLAY

- Large, 8-inch display for easy viewing
- 800 nits (cd2/M) brightness provides extraordinary visibility
- Capacitive touch screen with digital pen support



BREAK NEW GROUND

PROCESSOR

- Quad-core Intel® Pentium Silver processor

OPERATING SYSTEM

- Microsoft® Windows 10 IoT Enterprise
- Multiple languages supported (English, French, Spanish, German, Portuguese)

MEMORY AND DATA STORAGE

- 8 GB RAM
- 256 GB flash storage
- User-accessible smart card reader

GRAPHICS

- Intel® HD Graphics

DISPLAY

- Active viewing area: 8" (203 mm)
- Resolution: WXGA (1280 x 800)
- High-visibility backlit LCD for sunlight viewability
- Portrait or landscape orientation with automatic screen rotation

TOUCH SCREEN

- Projected capacitive multi-touch interface for use with gloves, small tip stylus, and in wet conditions

PHYSICAL KEYS

- LED backlight adjustment keys
- Windows/home key
- Power button
- 2 trigger buttons
- 4 programmable buttons

PORTS

- USB 3.0 x 1
- 3.5 mm audio jack
- USB Type-C power input jack
- Built-in speaker

BATTERY

- Removable Li-Ion battery, 5400mAh
- Operates 10+ hours on one charge
- Hot-swappable, easily changeable in field
- Optimized for strong performance in cold temperatures
- Excellent lifecycle performance
- Optional 8000mAh battery for 15+ hours of operation

PHYSICAL

- Size: 6.1 x 9.4 x 1.3 in (155 x 238 x 33 mm)
- Weight: 2.58 lbs (1.17 kg)
- Durable, shock-resistant design
- Easy-to-grip, impact-absorbing, overmolded bumpers
- Lightweight and ergonomic design

WIRELESS CONNECTIVITY

- Long Range Bluetooth® (tested to 1,500'/450 m)
- Wi-Fi- 802.11 a/b/g/n/ac, 2.4 GHz and 5 GHz
- 4G LTE (CELL models)

OTHER FEATURES

- TPM (Trusted Platform Module) v2.0

CERTIFICATIONS AND STANDARDS

- IEC 62368-1
- FCC Class B
- CE Marking (applicable EMC, R&TTE, and LVD directives)
- RoHS Compliant
- Industry Canada
- HERO (Hazard of Electromagnetic Radiation to Ordnance) certified

FIELD-TESTED RUGGED

- IP65 for dust and water resistance
- Operating Temperature:
14 F to 122 F (10° C to 50° C)
- Storage temperature:
-4 F to 140 F (-20° C to 60° C)
- MIL-STD-810G for shock and vibration protection

WARRANTY

- 2-Year Warranty
- Service Plans Available

STANDARD ACCESSORIES

- Standard removable battery
- AC wall charger
- Quick Start Guide
- Hand strap

Bundle with SurvPC

The Windows-based data collection program - with the option of running with the Esri OEM program for use in the field. Or use in the office with any Carlson office software.

